

**DECEMBER 2019**

---

**AT THE HELM ..**

**COMMITTEE**

Calum McGillivray (Chair)	A11	027 3218 867
Brian Parker (Secretary/Treasury)	D07	07 8665 434
Wayne Davys	B25	027 4463 142
Peter Lewis	E01A	022 0671 618
Matt Algie	C30	021 0270 6897
Dirk Sieling	Z03	021 2584 967
Brian Gordon	E36	027 4947 359
Scott Thomson	Z10	027 5945 846

**STAFF**

Dave Munday	Manager	0274 500 828
Graham Murrell	Travelift / Dock Master	
Ben Carmichael	Yard Hand	
Rebecca Walker	Office Admin	
Carolyn Butler	Front Desk	

All staff are contactable on 866 2456 OR Emergency/After Hours 027 824 8228 OR  
[info@whitiangamarina.co.nz](mailto:info@whitiangamarina.co.nz)

**From the Chair**

Hello All

Brilliant to see so many at the meet and greet and followed up with a great turn out for the AGM.

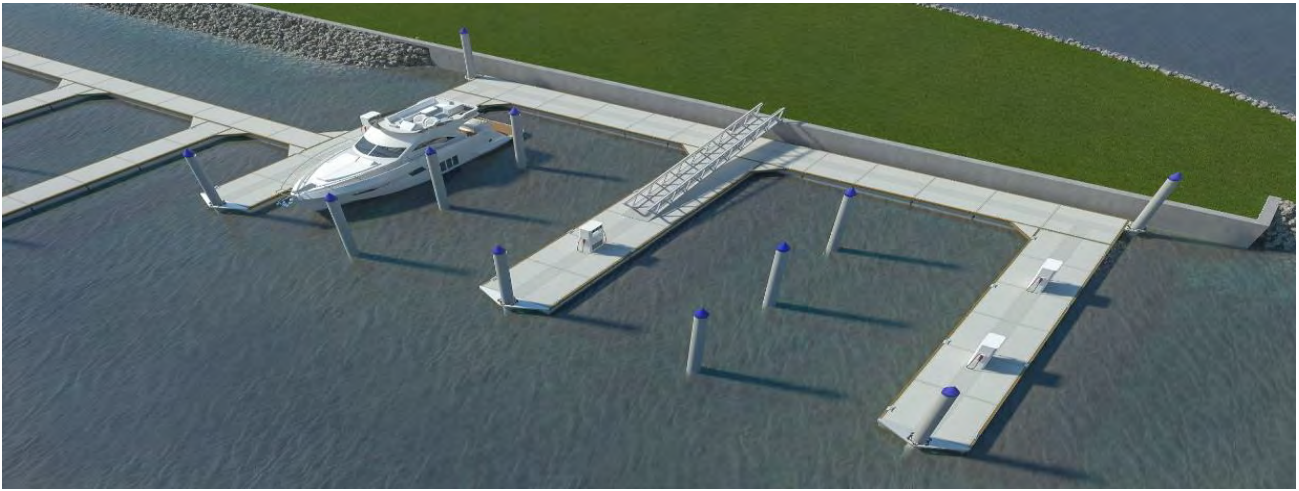
Sad to see Loretta moving on but great to have Rebecca capably step into the shoes very quickly.

I thank the committee for their hard work.

Have a great family Christmas new year and enjoy your time on the water.

Calum McGillivray  
Chairman





## Fuel Upgrade 2020

It's going to be an exciting year leading into 2020 with plans underway for the new fuel upgrade.

We are working very closely with Bellingham's Marine, and Carlyon Engineering with a possible start time of around April 2020.

The first phase is putting in a new trench to hold the fuel lines, power, sewage pipe, water, security cables etc. The next phase will be to start sheet pile work around the new underground Maskell fiberglass tank which will have a separate compartment for petrol and diesel.

Once this is all complete the focus will be the tie back system for the new sheet pile wall where the fuel dock sits at present will be constructed. We anticipate a start date around June 2020. The final construction part will be to remove the existing fuel dock/ piles/ dredge etc.

Once this has been completely removed the new pontoons along with the old pontoons will be built together on the northern reclamation. This will be around July so please all be aware from June/July there will be no refuelling in the marina so please be aware of this and we will be sending reminders our closer to the time.

We will do our best to keep you all notified about the time frames of this project.

## New Staff Member



Welcome Rebecca. Rebecca has joined our staff as office administrator to take over from long standing Loretta.

Loretta is leaving us to be closer to her family in the top of the South.

We look forward to you all meeting Rebecca in the office along with Carolyn Butler who works the front Desk.

## What You Can Do To Help Stop The Spread Of Marine Pests

A new marine pest has been detected in New Zealand waterways – *Clavelina oblonga* (common name -little bottles). More information is in the brochure at the end of this newsletter.

To help us stop the spread of all marine pests to our beautiful bays and harbours, we are asking you to clean your hull (right down to the bottom of and under the keel, or dead wood, plus any nooks and crannies).

You can do this by either;

- getting your boat lifted and giving the hull a wash off to remove all biofouling or
- arranging for a complete hull clean and antifoul if you haven't done this for a while.

If your boat has a live bait tank or a bow thruster, you'll also need to check them, as they are problem areas for fan worms. Take a careful look at the sides of the live bait tank as this is a prime location for very small fan worms. They may look like a small worm the size of a match. Make sure that you dispose of any that you remove onto land – they will keep growing if put back into the sea.

All owners/skippers of visiting boats will need to show that they have either: antifouled their hull within the last six months; or lifted and washed their hull in the last month.

Please keep receipts of haul outs and/or antifouling or call your local marina for more information and advice about how to meet requirements. Even if you don't intend to visit a marina, you may get a spot check from a regional council representative while you're at anchor. Visit the website of the marina you intend to visit for more information on marina requirements and what you need to know about this pest before setting sail.

## Rubbish During Christmas Season

It is looking like it will be a hot summer with a lot of boating to be had, which means a lot of boats will be coming and going out of the marina, can I ask you to **PLEASE PUT YOUR RUBBISH IN THE BIN**. We the marina staff every year arrive after a weekend and spend the morning sorting through all the rubbish while there is a perfectly good skip bin there half full. If you see the green wheelie bins full please don't leave it on the ground - throw it straight into the large skips.



## Ice

Make sure those fish you all catch are nicely chilled down this summer.

We have a freezer full of bagged salt ice available from the office. These are 6kg bags at \$8.00 per bag. Pop up to the ladies in the upstairs office and they will unlock the freezer for you.

## Cradle Hire Rate Review

We have reviewed our daily cradle charge/structure and there will be a change to the way we charge out cradle hire.

As from 1 August 2019 rates will be as follows: (GST inclusive)

### ***1 January to 31 August***

Up to 60 days - \$3.00 per metre  
Over 60 days - \$3.45 per metre

### ***1 September to 31 December***

Up to 30 days - \$3.00 per metre  
Over 30 days - \$6.00 per metre

## Office Space for Rent

The building next door to the marina office is up for rent, the rent is very competitive and it's a great location.

Spread the word – so we can get some tenants in here.

All enquiries to the marina office, either call us or pop in.



## Boat Insurance/EWOF's

Please ensure the office has a copy of your current insurance and EWOF. Easiest way is to email it to us - [info@whitiangamarina.co.nz](mailto:info@whitiangamarina.co.nz) or pop in with a copy and we will update your records.

## Temp Haul out Insurance

Crombie Lockwood look after our insurance now. They have put together a very competitive package for temporary 3rd party insurance cover for vessels being hauled out and put on the hardstand - to 15 days for \$85.00 (GST inclusive). Longer periods are also available.

Application for this temporary insurance cover can be done through the marina office.

## Water Blasting

The marina offers a water blasting service of your vessel at a labour rate of \$115.00 (GST inclusive). As you would expect, if your vessel is extremely dirty e.g. mussels or heavy fouling, we will charge extra

## Renting your Berths

If you privately rent your berth, you are NOT automatically entitled to sub-let your berth or give permission for some else to use it. The owner of the berth is the person who has full responsibility for whoever is in the berth. The berth owner may contact the office to get an "ok" to sub-lease the berth.

We don't want to lose our 'Clean Below' status and we want to safeguard all members vessels and visiting boats to the marina.

Please remember our policy regarding antifoul (within six months) or hull wash (within the last month) – the office needs to see proof these have occurred.

It is also a requirement that all vessels coming into the marina must supply a current insurance certificate.

## Berth Holder Blue Holder Blue Fuel Discount Counts

If you hold a blue fuel card, upon sale of your berth the card will be deleted from our system.

## Contact Details

Have you moved house? Changed your email? Please let the office know as it is important that we can keep in touch with you. You can email any changes to [info@whitiangamarina.co.nz](mailto:info@whitiangamarina.co.nz)



## Remembering Toby (Tribute by Peter Lewis)

Toby Morcom, an original Whitianga Marina Society berth owner and previous member of the Management Committee passed away on 25 October - aged 87 years.

Imagine preparing your yacht for a Christmas sail with your wife and three children.

*“Getting everything from the road, down across the beach at Flaxmill Bay, into a small dinghy and out to their yacht Fledermause, on a mooring and unloading it aboard.*

*Secreting the Christmas presents where the kids won't find them, food for 10 days, water in containers into the tanks, fuel, clothing etc, etc and lastly three kids and the 1st Mate. 15 dinghy loads and the kids are getting scratchy. The sea breeze is getting up and it is time to drop the mooring.*

*No wonder Toby was an ardent supporter for the new Marina.*

*Probably best known in yachting circles as the Commodore of MBBC's and NZ's first challenge for the Americas Cup in 1988.*

*Toby was also a founding member of the Whitianga Coast Guard, the first chairman of the Mercury Bay Museum Trust Board and very active in many other local organisations.”*



We regularly update our Whitianga Marina Facebook page – including a weekly post of the current diesel price - keep an eye on our page for current information - don't forget to **'LIKE'** us!

# Clavelina oblonga



*Clavelina oblonga* is a sea squirt (ascidian) that is newly detected in New Zealand. The only known population is on Great Barrier Island. It can form dense colonies, and can overgrow mussel and oyster farms, and can compete for food.

## What does it look like?

A colony is made up of many individual, interconnected sea squirts that look clear and gelatinous. They attach to rocks or marine structures. The common name for the *Clavelina* genus is “little bottles”.

## How does it spread

Long distance spread of *Clavelina oblonga* is through vessel biofouling, ballast water and aquaculture stock movement.

## How you can protect your farm

Although marine pests in the environment can be challenging to control, you can help to minimise the chance of *Clavelina oblonga* establishing by using good biosecurity measures.

- Clean and disinfect equipment used on farms.
- Ensure vessels have clean hulls when moving between locations.
- Avoid discharging ballast water from other areas near farms.

## What if i find it?

- If you find *Clavelina oblonga* on your farm, take a photo, collect a sample and record the location.
- Call the 0800 number for advice on how to take the sample in a bio-secure manner and for a sampling kit to be sent to you.
- For further information refer to the [Aquaculture Biosecurity handbook](#).

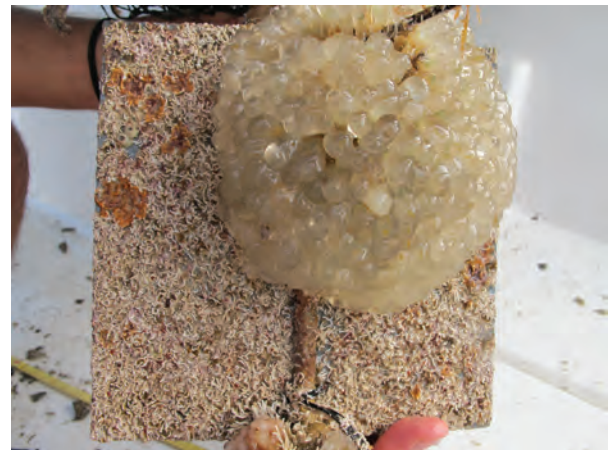


Photo: Xavier Turon and Maria Casso

Figure 1. Colony of *Clavelina oblonga* on settlement plates in the Mediterranean, note the clear gelatinous structures



Photo: Samantha Happy, Auckland Council

Figure 2. Close up of the *Clavelina oblonga* colony showing the clear gelatinous makeup of the sea-squirt

## If you think you have seen something:



Take a photo



Collect a sample



Record location



Call 0800 80 99 66  
All calls are confidential